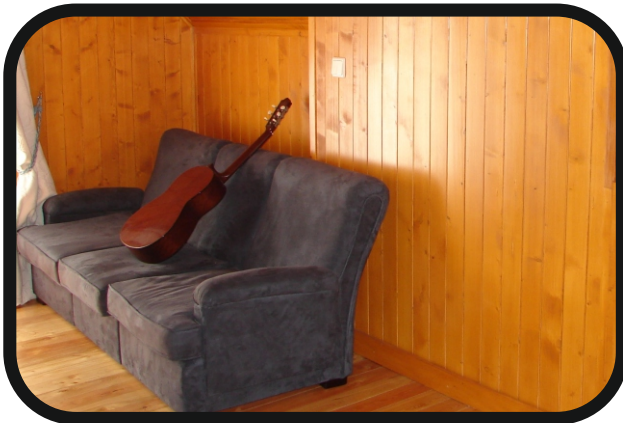




**CASMAL**  
CASAS DE MADEIRA

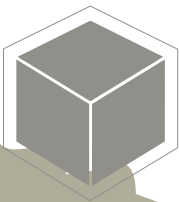
modelo  
RIBA TUA 255



criando  
bem  
estar

Telefone: 256 098 964 - Telemóvel: 910 924 638 - Web: www.casmal.pt - Email: geral@casmal.pt

Rua 1º de Maio, 3701-908 Arrifana - Telefone: 256 098 964 - Telemóvel: 910 924 638 - Web: www.casmal.pt - Email: geral@casmal.pt



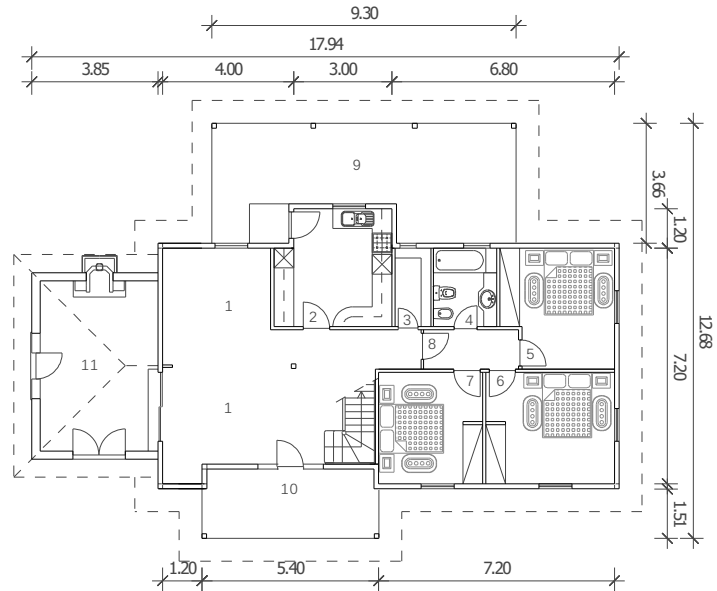
**CASMAL**  
CASAS DE MADEIRA

modelo **Riba Tua 255**

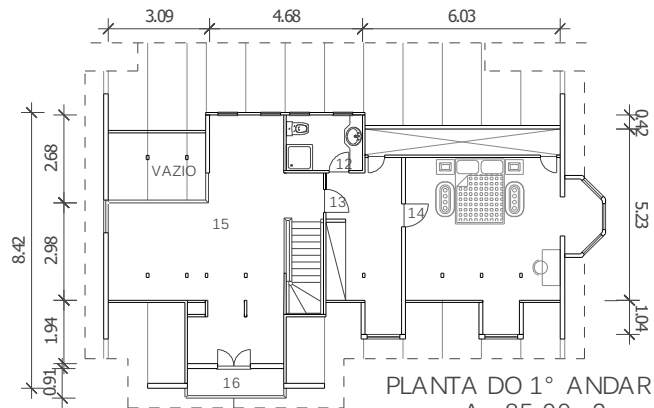
Telefone: 256 098 964 - Telemóvel: 910 924 638 - Web: www.casmal.pt - Email: geral@casmal.pt

LEGENDA: 255.00m<sup>2</sup>

1 SALA COMUM	36.20 m <sup>2</sup>
2 COZINHA	12.00m <sup>2</sup>
3 DESPENSA	2.50 m <sup>2</sup>
4 BANHO RCH	4.50 m <sup>2</sup>
5 QUARTO 1-RCH	12.00 m <sup>2</sup>
6 QUARTO 2-RCH	13.50m <sup>2</sup>
7 QUARTO 3-RCH	11.00m <sup>2</sup>
8 HALL INT.	5.00 m <sup>2</sup>
9 TELHEIRO DA COZINHA	34.00m <sup>2</sup>
10 VARANDAS RCH	14.00 m <sup>2</sup>
11 ANEXO SALA	19.00 m <sup>2</sup>
12 BANHO 1% 167	19.00 m <sup>2</sup>
13 VESTIARIO	11.00m <sup>2</sup>
14 QUARTO 4 1% 167	17.00 m <sup>2</sup>
15 SALETA	29.20 m <sup>2</sup>
16 VARANDAS 1% 167	17.80m <sup>2</sup>



PLANTA DO R/CHÃO  
A= 170.00m<sup>2</sup>



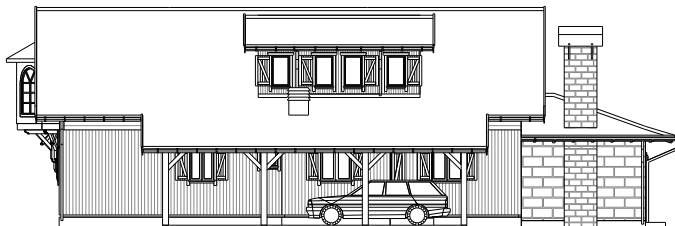
PLANTA DO 1º ANDAR  
A= 85.00m<sup>2</sup>



FRENTE



LAT. DIREITO



POSTERIOR



LAT. ESQUERDO

**criando  
bem  
estar**