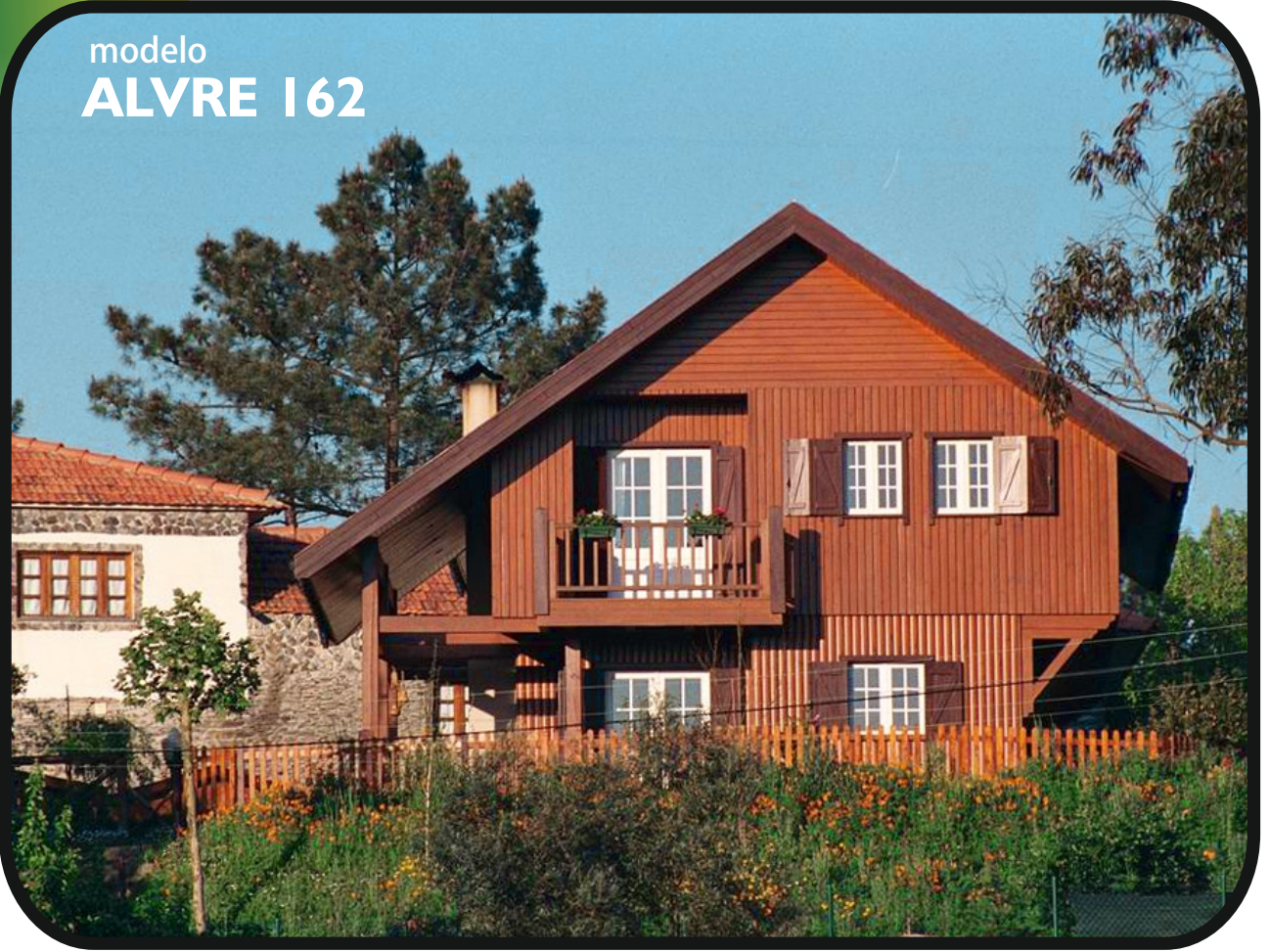




CASMAL
CASAS DE MADEIRA

modelo
ALVRE 162



**criando
bem
estar**

Telefone: 256 098 964 - Telemóvel: 910 924 638 - Web: www.casmal.pt - Email: geral@casmal.pt

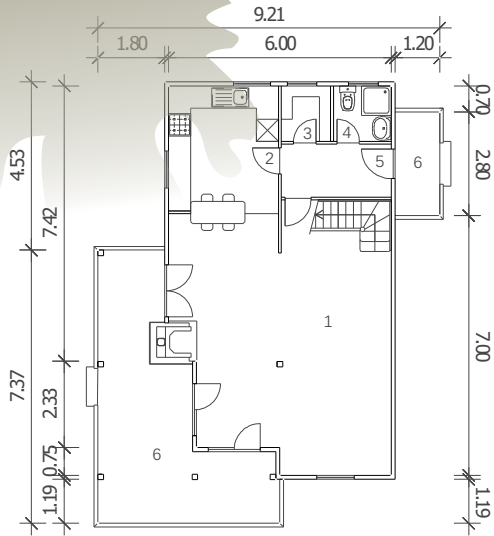
Rua 1º de Maio, 3701-908 Arrifana - Telefone: 256 098 964 - Telemóvel: 910 924 638 - Web: www.casmal.pt - Email: geral@casmal.pt



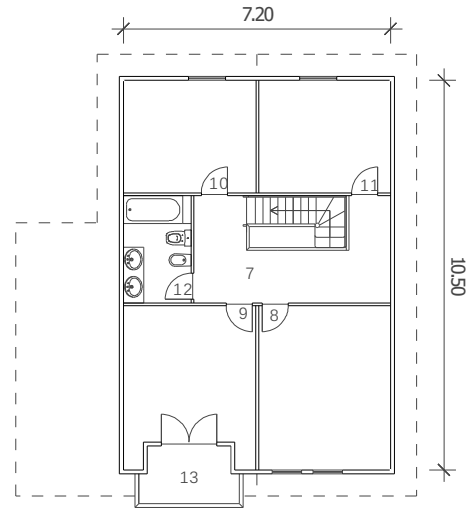
CASMAL
CASAS DE MADEIRA

modelo **Alvre 162**

Telefone: 256 098 964 - Telemóvel: 910 924 638 - Web: www.casmal.pt - Email: geral@casmal.pt



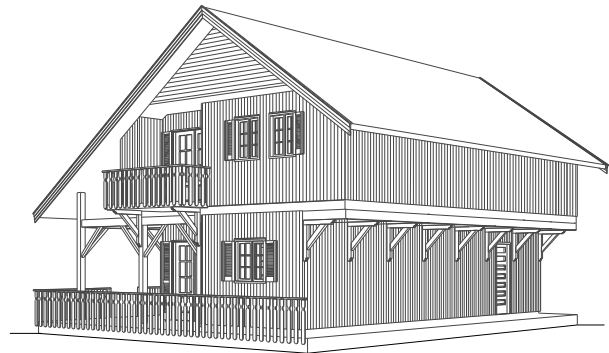
PLANTA DO R/CHÃO
80.00 m²



PLANTA DO 1º ANDAR
82.50 m²

LEGENDA:

1	SALA COMUM	37.20 m ²
2	COZINHA	10.17 m ²
3	DESPENSA	2.00 m ²
4	W.C.	2.35 m ²
5	HALL ENTRADA	4.20 m ²
6	VARANDAS	26.00 m ²
7	HALL SUPERIOR	11.25 m ²
8	QUARTO 1	15.75 m ²
9	QUARTO 2	14.00 m ²
10	QUARTO 3	11.00 m ²
11	QUARTO 4	11.00 m ²
12	BANHO	5.30 m ²
13	VARANDA SUPERIOR	4.00 m ²



**criando
bem
estar**