



CASMAL
CASAS DE MADEIRA

modelo
MINDELO 225



**criando
bem
estar**

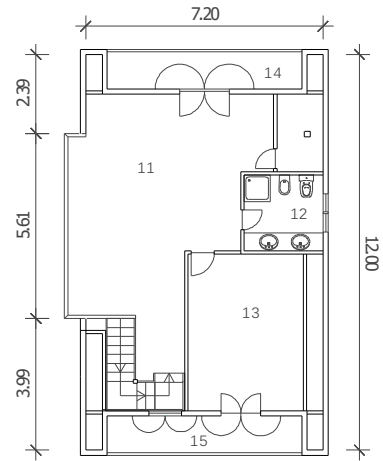
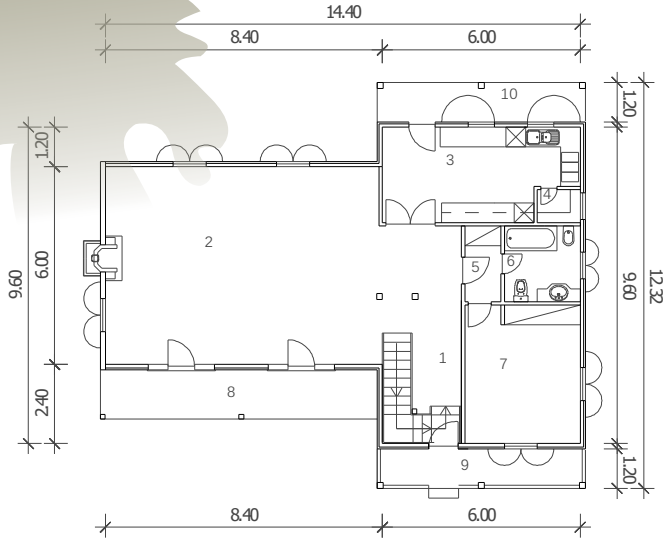
Telefone: 256 098 964 - Telemóvel: 910 924 638 - Web: www.casmal.pt - Email: geral@casmal.pt

Rua 1º de Maio, 3701-908 Arrifana - Telefone: 256 098 964 - Telemóvel: 910 924 638 - Web: www.casmal.pt - Email: geral@casmal.pt



CASMAL
CASAS DE MADEIRA

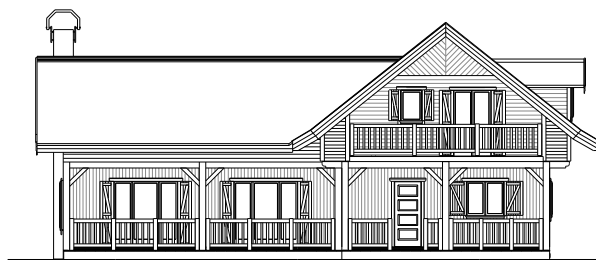
modelo **Mindeló 225**



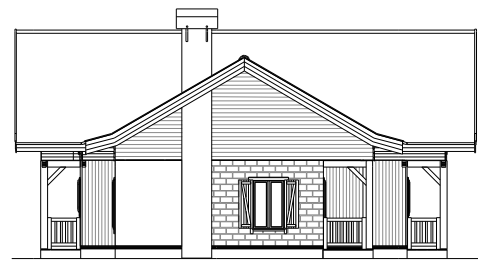
modelo - MINDELO 240

LEGENDA:

1	HALL ENTRADA	15.80	m ²	9	VAR. ENTRADA	7.50	m ²
2	SALA COMUM	50.40	m ²	10	TELHEIRO COZ.	7.50	m ²
3	COZINHA	15.83	m ²	11	SALA 1º ANDAR	32.30	m ²
4	DESPENSA	1.30	m ²	12	BANHO 1º AND.	4.14	m ²
5	HALL	2.53	m ²	13	QUARTO 2	19.46	m ²
6	BANHO-RCH	5.30	m ²	14	VARANDA 1º A	7.10	m ²
7	QUARTO 1	14.70	m ²	15	VARANDA 1º A	7.10	m ²
8	VARANDA SALA	10.80	m ²				



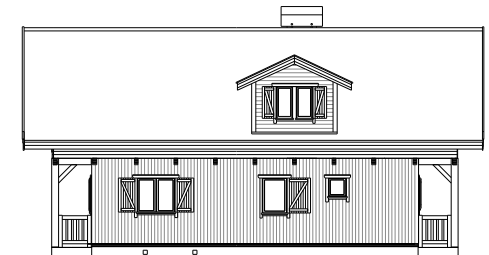
FRETE



LAT. ESQUERDO



POSTERIOR



LAT. DIREITO

**criando
bem
estar**