



CASMAL
CASAS DE MADEIRA



Telefone: 256 098 964 - Telemóvel: 910 924 638 - Web: www.casmal.pt - Email: geral@casmal.pt

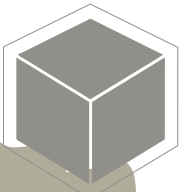


modelo
PENHAS DOURADAS I 25



**criando
bem
estar**

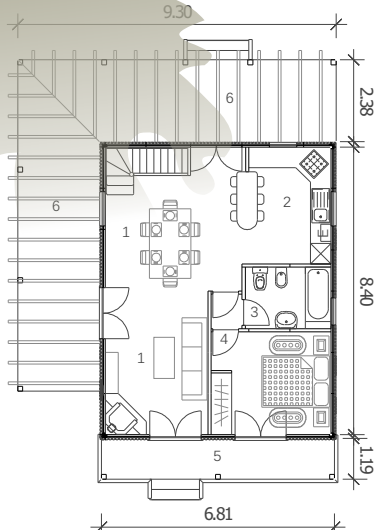
Rua 1º de Maio, 3701-908 Arrifana - Telefone: 256 098 964 - Telemóvel: 910 924 638 - Web: www.casmal.pt - Email: geral@casmal.pt



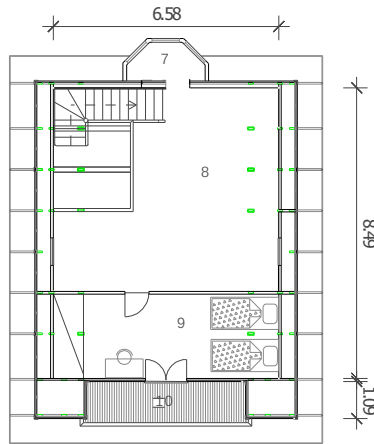
CASMAL
CASAS DE MADEIRA

modelo **Penhas Douradas 125**

Telefone: 256 098 964 - Telemóvel: 910 924 638 - Web: www.casmal.pt - Email: geral@casmal.pt



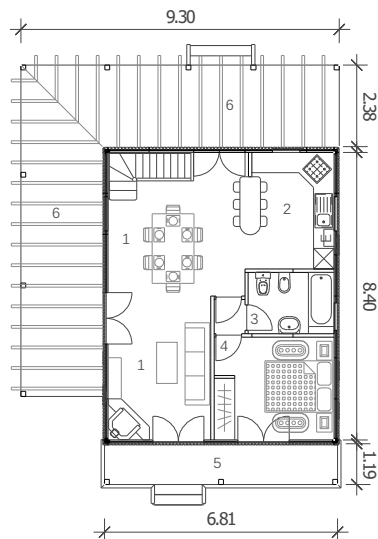
PLANTA DO RES DO CHÃO
67.00m²



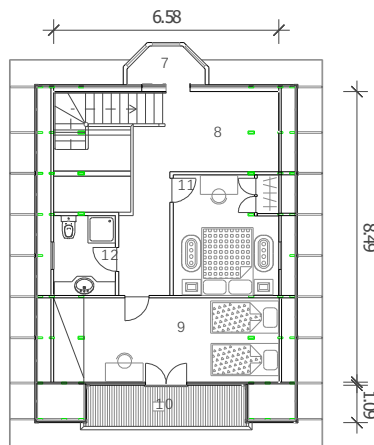
PLANTA DO 1 ANDAR
58.00m²

LEGENDA:

1	SALA COMUM	29.80	m ²
2	COZINHA	8.50	m ²
3	BANHO1	4.50	m ²
4	QUARTO1	10.50	m ²
5	VARANDA FRENTE	8.00	m ²
6	Varanda com Pergola	39.65	m ²
7	WINDOW BAY	1.50	m ²
8	MANSARDA	32.00	m ²
9	QUARTO2	16.00	m ²
10	VARANDA 1 ANDAR	6.00	m ²



PLANTA DO RES DO CHÃO
67.00m²



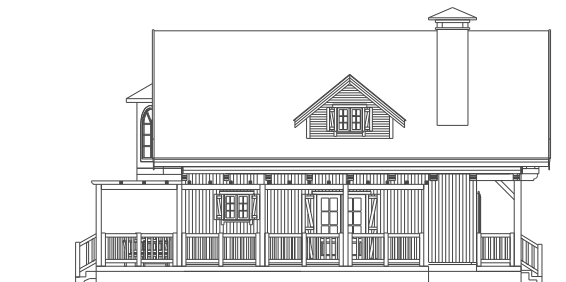
PLANTA DO 1 ANDAR
58.00m²

LEGENDA:

1	SALA COMUM	29.80	m ²
2	COZINHA	8.50	m ²
3	BANHO1	4.50	m ²
4	QUARTO 1	10.50	m ²
5	VARANDA FRENTE	8.00	m ²
6	Varanda com Pergola	39.65	m ²
7	WINDOW BAY	1.50	m ²
8	MANSARDA	32.00	m ²
9	QUARTO 2	16.00	m ²
10	VARANDA 1 ANDAR	6.00	m ²
11	QUARTO 3	11.00	m ²
12	BANHO1	4.20	m ²



FRENTE



LAT. ESQUERDO

**criando
bem
estar**