



CASMAL
CASAS DE MADEIRA

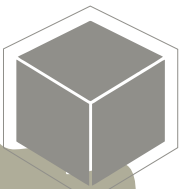
modelo
SERRA D'AIRE



Telefone: 256 098 964 - Telemóvel: 910 924 638 - Web: www.casmal.pt - Email: geral@casmal.pt

**criando
bem
estar**

Rua 1º de Maio, 3701-908 Arrifana - Telefone: 256 098 964 - Telemóvel: 910 924 638 - Web: www.casmal.pt - Email: geral@casmal.pt

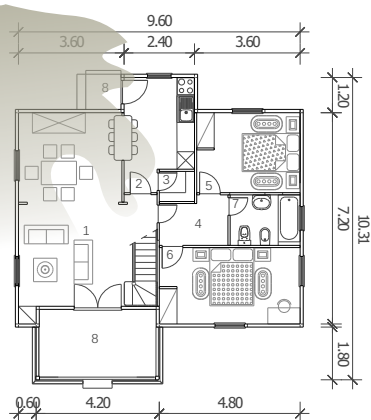


CASMAL

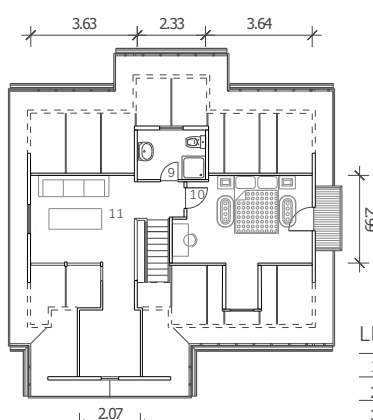
CASAS DE MADEIRA

Telefone: 256 098 964 - Telemóvel: 910 924 638 - Web: www.casmal.pt - Email: geral@casmal.pt

modelo Serra D'Aire I20



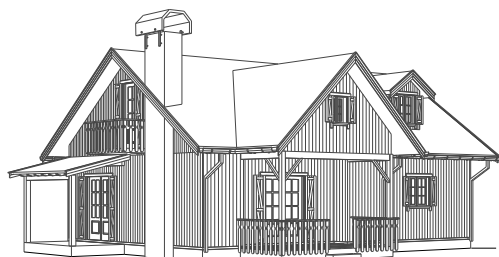
PLANTA DO R/CH
84.00m²



PLANTA 1º ANDAR
35.50m²

LEGENDA: 119.50m²

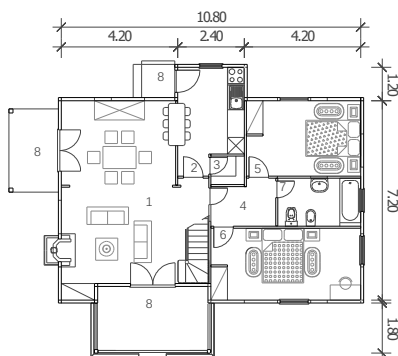
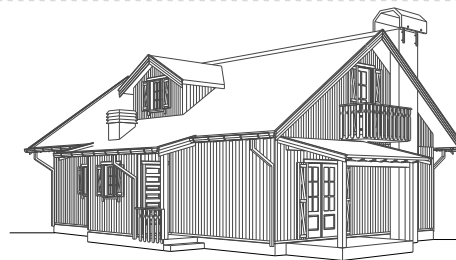
1 SALA COMUM	29.00 m ²
2 COZINHA	8.50 m ²
3 DESPENSA	1.50 m ²
4 HALL QUARTOS	3.00 m ²
5 QUARTO 1	10.00 m ²
6 QUARTO 2	12.00 m ²
7 BANHO RCH	4.50 m ²
8 VARANDAS	12.00 m ²
9 BANHO 1º A	4.00 m ²
10 QUARTO 3	16.00 m ²
11 MANSARDA	17.00 m ²



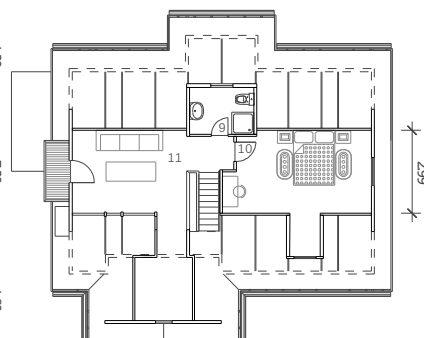
modelo Serra D'Aire I41

LEGENDA: 141.00m²

1 SALA COMUM	32.50 m ²
2 COZINHA	8.50 m ²
3 DESPENSA	1.50 m ²
4 HALL QUARTOS	3.00 m ²
5 QUARTO 1	11.50 m ²
6 QUARTO 2	14.00 m ²
7 BANHO RCH	5.50 m ²
8 VARANDAS	16.00 m ²
9 BANHO 1º A	4.00 m ²
10 QUARTO 3	17.50 m ²
11 MANSARDA	19.00 m ²



PLANTA DO R/CHÃO
93.00m²



PLANTA 1º ANDAR
48.00m²

criando
bem
estar