



**CASMAL**  
CASAS DE MADEIRA

Telefone: 256 098 964 - Telemóvel: 910 924 638 - Web: www.casmal.pt - Email: geral@casmal.pt



modelo  
**POMBAL 120**



**criando  
bem  
estar**

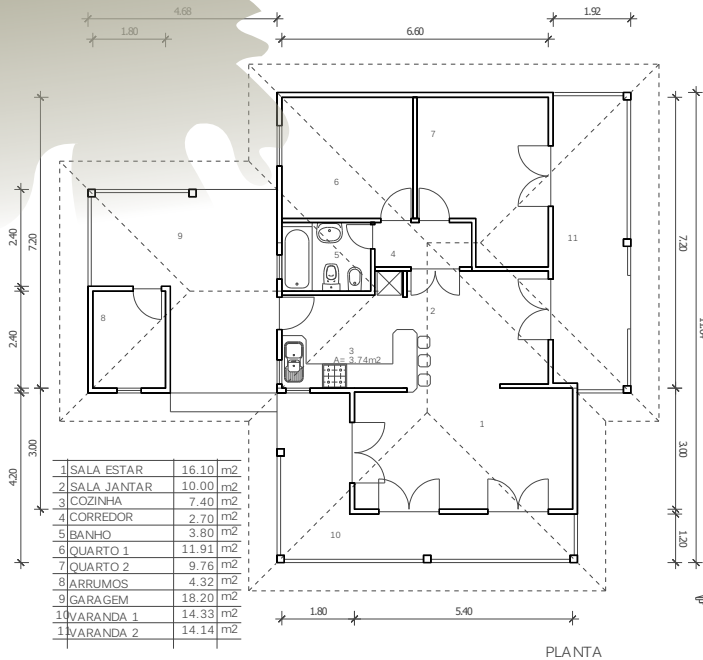
Rua 1º de Maio, 3701-908 Arrifana - Telefone: 256 098 964 - Telemóvel: 910 924 638 - Web: www.casmal.pt - Email: geral@casmal.pt



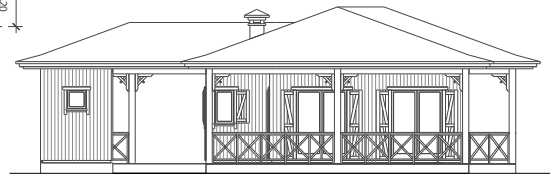
**CASMAL**  
CASAS DE MADEIRA

modelo

Pombal 120



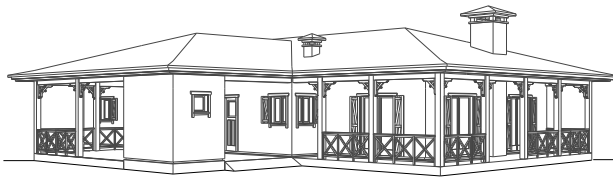
PLANTA



FRENTE

modelo

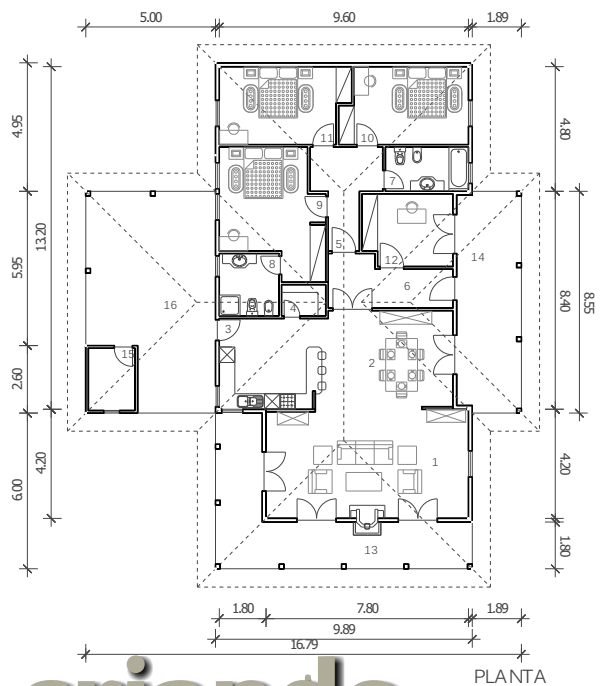
Pombal 252



PERSPECTIVA

LEGENDA:

1	SALA ESTAR	31.80	m <sup>2</sup>
2	SALA JANTAR	20.10	m <sup>2</sup>
3	COZINHA	13.00	m <sup>2</sup>
4	DESPENSA	2.10	m <sup>2</sup>
5	HALL QUARTOS	8.00	m <sup>2</sup>
6	HALL	8.30	m <sup>2</sup>
7	BANHO 1	5.50	m <sup>2</sup>
8	BANHO 2	5.50	m <sup>2</sup>
9	QUARTO 1	16.60	m <sup>2</sup>
10	QUARTO 2	14.10	m <sup>2</sup>
11	QUARTO 3	14.40	m <sup>2</sup>
12	ESCRITÓRIO	9.50	m <sup>2</sup>
13	VARANDA 1	25.40	m <sup>2</sup>
14	VARANDA 2	21.10	m <sup>2</sup>
15	ARRUMOS	4.40	m <sup>2</sup>
16	GARAGENS	37.70	m <sup>2</sup>



PLANTA

**criando  
bem  
estar**